

POVAL POD

Our newly added Poval Pod has been shaped as an oval with a small opening; meaning it can feel a lot more concealed and a lot more secure as the walls shroud the user from most angles.

Poval Pods are supplied with a table that is fitted at one end to the wall with a bracket, then supported with a steel leg at the other end. The table is made using Senator standard MFC. They are also supplied with a power module that has 2 x power, 1 x USB A and 1 x USB C components.

Poval Pods are 1500mm deep, 2125mm high and a grand 2500mm wide as standard.

The roof is also fitted with four PIR activated downlights, meaning the light will activate with movement and can be modified to suit.

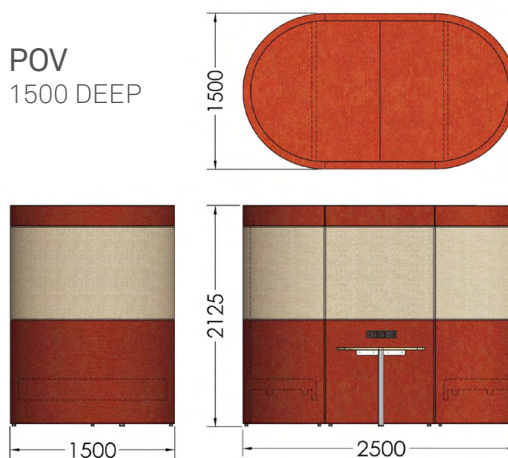
Purchase of Poval Pods include delivery and installation during normal working hours.



DIMENSIONS

POVAL POD
CONCEALED POD
2125 HIGH x
2500WIDE

POV
1500 DEEP



DESIGN By Senator

Our team of talented in house designers are responsible for creating elegant, innovative furniture designs which not only look beautiful, but minimise the impact on the world around us. personal taste.

They come from all over the world, but are based in our Design Centre located in a quiet Lancashire village just outside the Ribble Valley. Our dedicated facility is over three floors which include studios, a materials test centre and prototyping lab.

STANDARD FEATURES

The main carcass construction varies from solid birch wood and 12-18mm plywood for strength and rigidity.
 3mm MDF is bent to create the curved walls of the Poval.
 Covered in multi density foam to soften the walls.
 Fully upholstered in a material of your choosing.
 18mm thick shaped MFC table and support with 2mm ABS edging.
 Completed with adjustable feet.

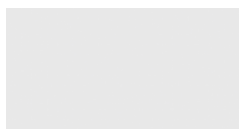
MFC TABLE FINISHES



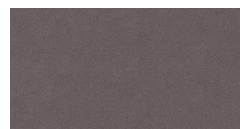
WHITE (WH)



GLOSS WHITE** (GW)
WITH STD WHITE EDGE



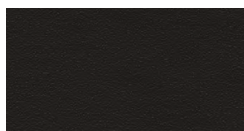
LIGHT GREY (GY)



GRAPHITE* (GT)
WITH BLACK EDGE



SILVER* (SV)



BLACK (BK)



CLAY* (LY)



DENIM (DN)



MAPLE (MP)



URBAN MAPLE (UM)



BEECH (BH)



AUTUMN (AT)



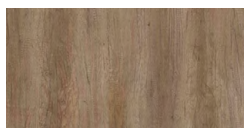
STRATA OAK (SO)



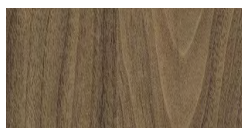
ENGLISH OAK (EO)



HIGHLAND OAK (HD)



WINTER OAK (WK)



CARINI WALNUT (CW)

Melamine Faced Chipboard (MFC) is available in both 18mm and 25mm unless otherwise stated:
 Clay*, Graphite* and Silver* is 18mm only and Gloss White** is a premium finish with a 10% addition charge.

Colour Disclaimer: Printed images and digital images may appear differently to the final MFC finish.

ENVIRONMENTAL

Material Content

Components are constructed of the following



Plywood



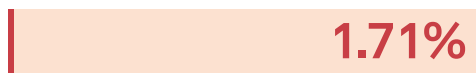
Solid Wood



MDF



PU Foam



Fabric



Steel



MFC

Recycled Content

Contains up to 1.40% of Recycled Material



Recycled Content (% By Weight)

Recyclability

The range is 99% recyclable

99%

SENATOR 3 R'S

Senator is committed to continually improving the sustainability of all environmental aspects within our business.

To meet both international standards and our own environmental targets we apply the three R's principle -**Reduce, Reuse and Recycle.**

Whilst recycling is the element which receives the most exposure it is actually the last option available and should never be the prime target in anyone's battle to reduce waste.

It is our duty as individuals and as a company to initially attempt to **Reduce** usage. Then we should look to **Reuse** wherever possible and finally, only after these two processes have been exhausted, should we consider **Recycling.**

Reduce Reuse Recycle